

ProWorx - The Professional's Choice

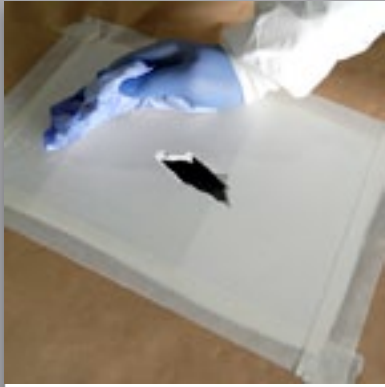
# Fibreglass bridging repair



## STEP BY STEP

### FIBREGLASS BRIDGING REPAIR

Fibrefix bridging repair filler gives great strength and durability with the added bonus of being waterproof. Applications vary from automotive to marine, industrial or commercial. The versatility of Fibrefix is ideal for small to medium repairs.



**1** Clean and degrease the area to be repaired.



**2** Remove all the loose/fractured particulate and paint from the affected area with a DA sander using a P80 grit disc.



**3** Cut a piece of Aluminium mesh to the approximate size of repair. Secure the mesh in place ready for the filler application.



**4** Once the area has been prepared, mix your FibreFix filler with hardener at a ratio of 3% at an ambient temp of 20°C.



**5** Then apply your full coat of filler with the applicator provided making sure that firm and even pressure is being applied.



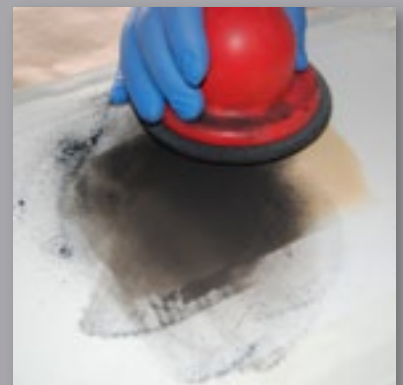
**6** Once cured sand with a P40 or P80 to achieve general shape.



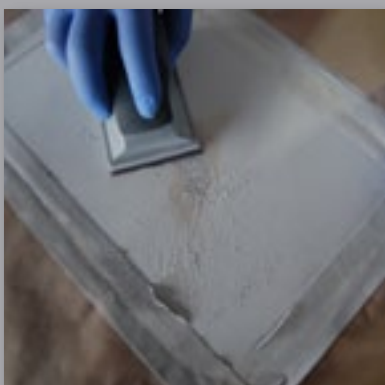
**7** Once the area has been prepared mix your ProWorx filler with hardener at a ratio of 2% at an ambient temp of 20°C.



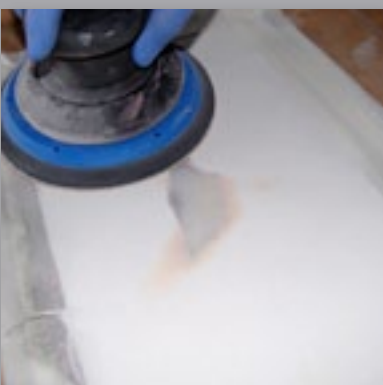
**8** Then apply a full coat of ProWorx bulk filler with the applicator provided making sure that firm and even pressure is being applied.



**9** Once cured apply dry powder guide coat.



**10** Block sand with either a P80 or a P120.



**11** Feather out repair with P320.



**12** Final inspection ready for next application process.