

6

5

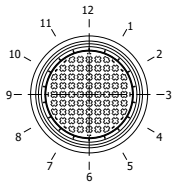
4

3

2

1

CLOCK FACE POSITIONS



VIEW LOOKING DOWN ON THE TANK.
TREAT THIS DIAGRAM LIKE A CLOCKFACE.
DISCHARGE IS SET AT 12 O'CLOCK.
INDICATE THE RELATIVE POSITIONS FOR 'INLETS',
'CABLE DUCT' AND VENT (IF REQUIRED)

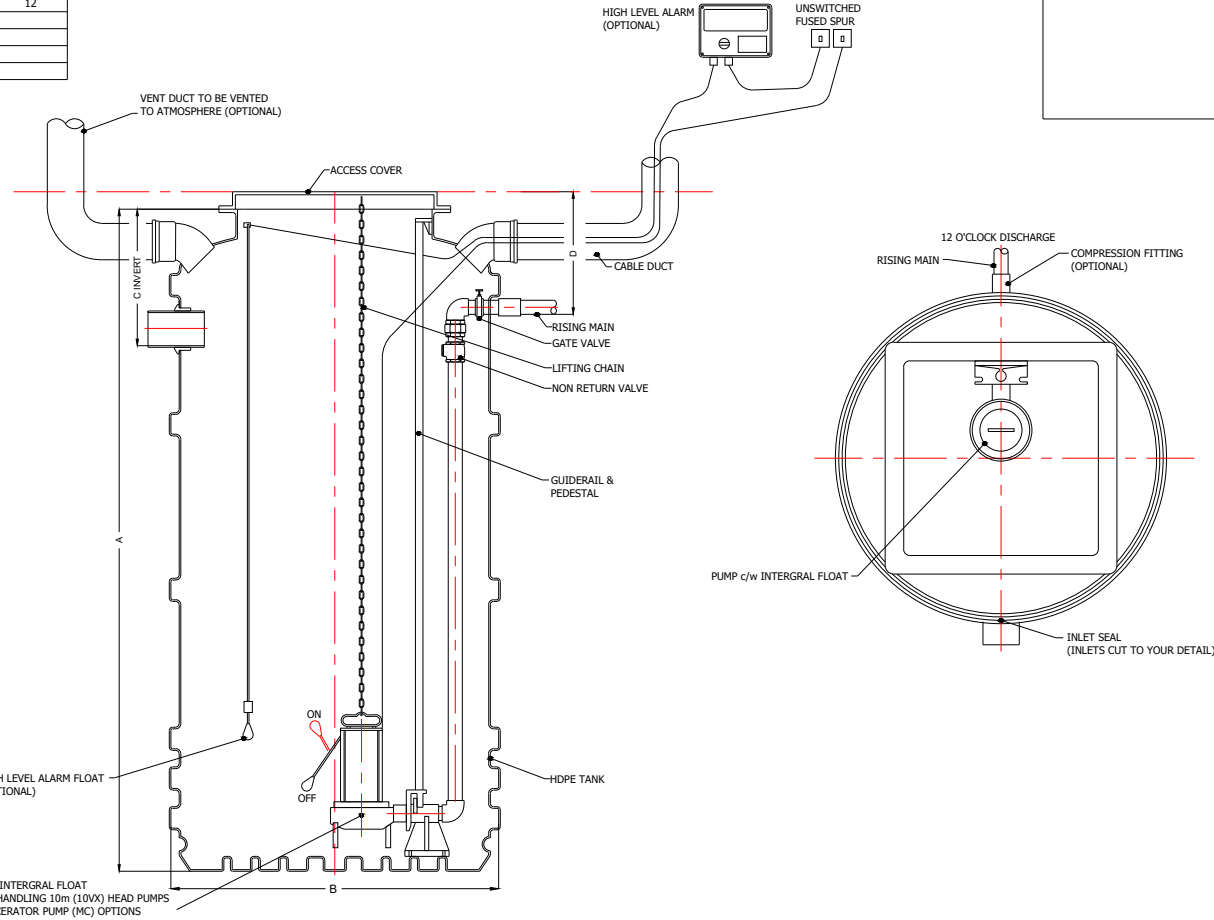
FABRICATION SPECIFICATIONS				
ITEM	INDEX	DEPTH (mm)	DIAMETER (mm)	CLOCKFACE POSITION
Tank Depth	A	2000		
Tank Dia.	B		1000	
Inlet	C1		110	
Inlet	C2			
Inlet	C3			
Discharge	D		63	12
Cable Duct			110	
Vent			110	


**PLEASE NOTE THAT THIS DOCUMENT MUST
BE READ IN CONJUNCTION WITH THE
INSTALLATION & OPERATING GUIDELINES**

COMMENTS

PLEASE NOTE - INLET INVERT SHOULD
BE BETWEEN 400 - 515mm

INLET SEALS AND DUCTS CAN BE
SUPPLIED LOOSE TO BE CRILLED AND
FITTED ON SITE.



DRAWN BY Jc	DRAWING DATE 04/03/21	EFFECTIVE DATE 04/03/21	PRODUCT NAME: Tricel Mini 1700L Single	PRODUCT NUMBER: 104453	ACC NUMBER:	 TRICEL
TOLERANCE: +/- 5		MATERIAL: MDPE	SCALE: NOT TO SCALE	DRAWING TYPE: FG		
UNITS: mm		DRWG NO: N/A	TANK REVISION: 0	REV. NO. 0	PAGE SIZE: A4	
JOB NUMBER: N/A		WEIGHT (KG): 85	PROJECT NO:	ECO NO:	COUNTRY: UK	

6

5

4

3

2

1