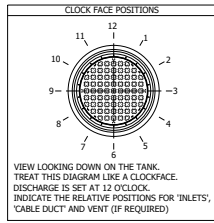
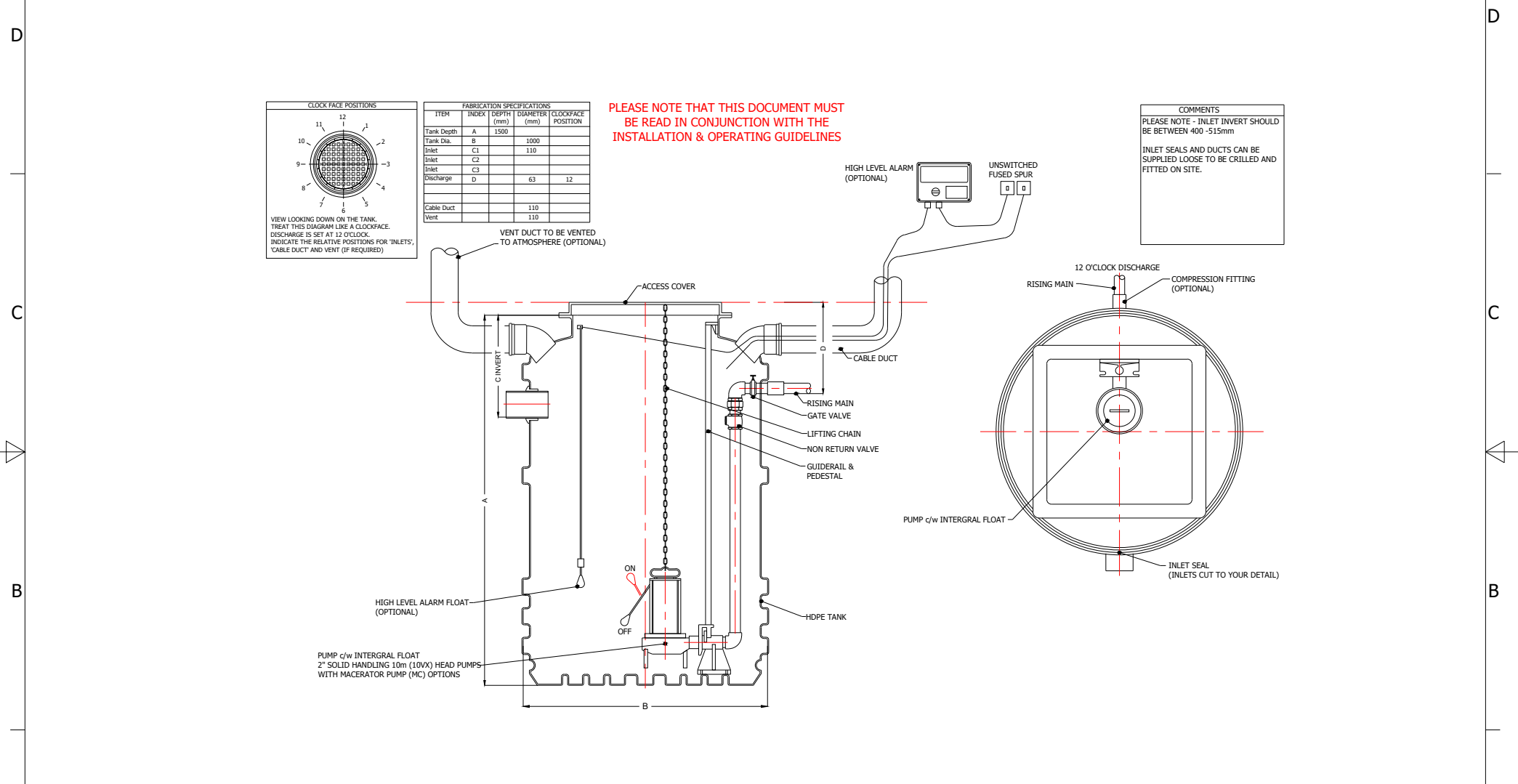



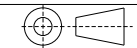
6 | 5 | 4 | 3 | 2 | 1



FABRICATION SPECIFICATIONS				
ITEM	INDEX	DEPTH (mm)	DIAMETER (mm)	CLOCKFACE POSITION
Tank Depth	A	1500		
Tank Dia.	B		1000	
Inlet	C1		110	
Inlet	C2			
Inlet	C3			
Discharge	D	63		12
Cable Duct			110	
Vent			110	

**PLEASE NOTE THAT THIS DOCUMENT MUST BE READ IN CONJUNCTION WITH THE INSTALLATION & OPERATING GUIDELINES**

**COMMENTS**  
 PLEASE NOTE - INLET INVERT SHOULD BE BETWEEN 400 - 515mm  
 INLET SEALS AND DUCTS CAN BE SUPPLIED LOOSE TO BE CRILLED AND FITTED ON SITE.

DRAWN BY Jc	DRAWING DATE 04/03/21	EFFECTIVE DATE: 04/03/21	PRODUCT NAME:	PRODUCT NUMBER:	ACC NUMBER:		
			Tricel Mini 1200L Single	104454			
TOLERANCE: +/- 5		MATERIAL: MDPE	SCALE: NOT TO SCALE	DRAWING TYPE: FG			
UNITS: mm		DRWG NO: N/A	TANK REVISION:	REV. NO.			PAGE SIZE: A4
JOB NUMBER: N/A		WEIGHT (KG): 80	PROJECT NO:	ECO NO:			COUNTRY: UK

6 | 5 | 4 | 3 | 2 | 1